



AMBIKA ENGINEERING WORKS

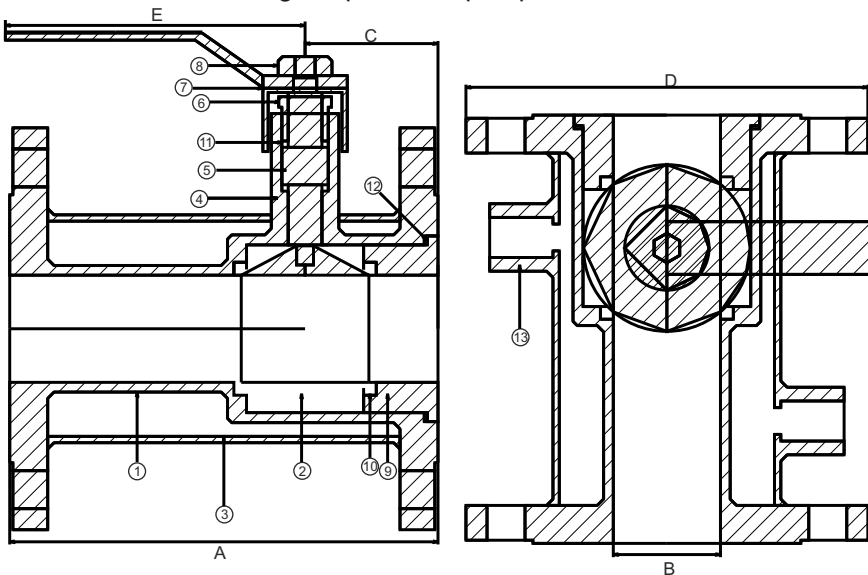
19, Gr.Floor,Shanta Industrial Premises Co-op Society Ltd, I.BPatel Road, Goregaon (East) Mumbai - 400063

Tel : 022-26858793 • Cell : 09821271748 • Telefax : 022-26852558

JACKETED BALL VALVE

Salient Features and Specialities:

- ★ **Specially Designed for 300°C fluid**
- ★ Positive shut off
- ★ Longer life
- ★ Quick in action
- ★ No lubrication
- ★ Visual on / off indication
- ★ Compact design
- ★ Corrosion resistant
- ★ Low pressure drop
- ★ Simplicity
- ★ Available in both regular port & full port patterns



End Connections : Flanged

TESTING STD.API 598

FACE TO FACE AS PER ANSI B 16.10.

END FLANGE AS PER ANSI B 16.5

Sr. No.	NAME OF PARTS	MATERIAL
1	BODY	AISI 304/316
2	BALL	CF8/CF8M
3	JACKETPIPE	AISI 304/316
4	BONNET	A.I.S.I. 304/316
5	STEM	A.I.S.I. 304/316
6	GLAND NUT	A.I.S.I. 304/316
7	HANDLE	SS 304
8	NUT	SS 304
9	ADAPTOR	AISI 304/316
10	SEAT RING	PEEK
11	STEM PACKING	GFT
12	BODY SEAL	GFT
13	½" BSP Coupline	SS 304

TEST PRESSURES IN PSIG		
HYDROSTATIC		AIR
BODY	SEAT	SEAT
31KG/CM2	21KG/CM2	7KG/CM2

SIZE	A	B	C	D	E	
1/2"x1"	127	12.7	40	108 (1"ASA.150#)	200	
1"x1 1/2"	165	25	55	127 (1 1/2"ASA.150#)	200	
1 1/2"x2"	178	38	53	152 (2"ASA.150#)	230	
2"x3"	203	51	63	190 (3"ASA.150#)	230	
3"x4"	229	76	90	229 (4"ASA.150#)	250	
4"x6"	267	100	130	279 (6"ASA.150#)	350	
6"x 10"	292	150	340	406 (10"ASA.150#)	400	Gearbox